

# Most efficient in long tool life and cost!

**Newly  
launched**

Latest steel grade & custom engineered for all purpose

## Conic Long Life Punch (CLP)

High performance for all purpose, especially for mild steel, galvanized steel with high corrosion resistance! Special shapes are also available for this treatment.

### ◇ Feature

3 times hit ratio in our company's comparison

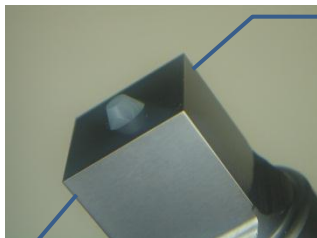
Increased number of hits.

Increased products quality

Reduced burrs by high wear resistance.

Eliminates inferior goods and machine down time

Stable processing without problem.



Latest steel grade selected carefully / anti chipping

Strong durability (HV3,000~3,500) / 100% better wearing

Coating depth is 2~3μ

Dark gray color

Conic latest punch newly launched !

In the environment where high speed processing and a great variety of sheet metals circulate, our duty is to realize **「High profit punching process」** for all of Conic customers.

#### ■ Surface treatment (Feature)

Total performance	Type of treatment	Aptitude			
		Stainless	Mild steel	Aluminum	Galvanised
High performance ↑↓ Cost performance	Super Dry Punch (SDP)	★★★★★	★★★★★	★★★	★★★
	<b>Conic Long Life Punch (CLP)</b>	<b>★★★★★</b>	<b>★★★★★</b>	<b>★★★★★</b>	<b>★★★★★</b>
	Conic Hard Punch (CHP)	★★★	★★★★	★★★★★	★★★★
	Standard High Speed Steel	★★	★★★	★★★	★★★
	Standard D2 material	★	★	★★	★

**CONIC Co., Ltd.**

<http://www.conic.co.jp/>