

NEW!

Easy Stamp Tool

High Quality & Technology For The Future

CONIC

NEWS

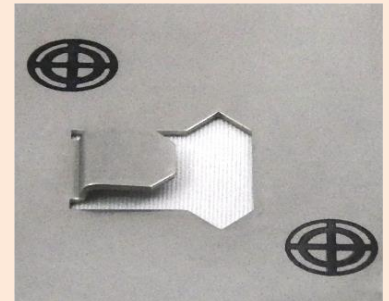
Stamp to sheet metals in ink!

Example of use...

1. To mark the center point position.
2. Mark on production management.
3. Similar product identification at the time of multi-cavity.

You can use a variety of applications!

Stamps example



Stamp embedded tooling
(Cap is also can be mounted)



**You can delete the ink
without any damage!**

Set :

(upper tooling, die, stamp, ink, solvent for stamp)

**Thick turret
B (1-1/4) station
Downward**

Stamp specification :

- Inside of $\Phi 11$ mm
- Quick-drying ink for metal
 - Black : Drying time 30sec~1min
 - Other color : Drying time 1min~2min

CONIC Co., Ltd.

TEL.+81-868-38-6154

FAX.+81-868-38-6331

E-mail: tools@conic.co.jp

URL: <http://www.conic.co.jp/EnPage/index.html>