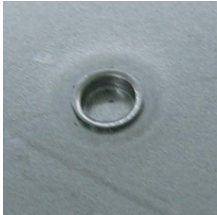


Positioning tool (PAT.PEND)

Labor saving of welding work is realized !



This tool is designed same function as half punch or extrusion tools for positioning reference of spotwelding. However, backside surface does not have any damage or holes,so, it is not necessary to repair or applying putty on the surface before paint. This tool makes 4mm diameter extraction reference on cold roll steel (Thickness 1.0-1.6t). But no mark on backside.

Method of general positioning

METHOD 1 Use extrusion tool to make positioning reference for spotwelding.

PROBLEM Need to repair or apply putty before paint.

METHOD 2 Use special jigs for spot welding positioning.

PROBLEM Jig manufacturing cost and management cost.

Problem is clear by this tool !



Strong point

Surface



Backside



Upward positioning
Mark on upperside
Cold roll ALM 0.8-1.6mm Thickness

Downward positioning
Mark on bottomside
Cold roll ALM 0.8-1.2mm Thickness

NOTE: Stainless steel, material with plastic coat, painted plate is not fit to this application.