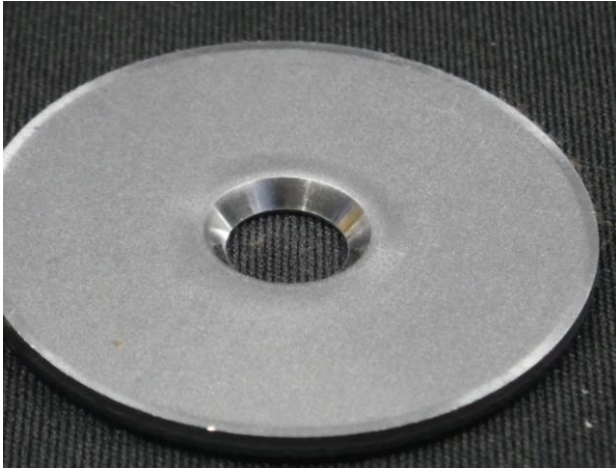


5. Countersink for countersunk screw (chamfering)



■ Usage

Used for sinking a countersunk screw head, a rivet or the like.

This tool makes a chamfer on a corner after punching.

■ Shapes Overview

It forms a C chamfering after processing a pre-hole.

Examples



This is the example of chamfering 120° on a corner.

It is used to sink a rivet.



The example of making a C chamfering on a rectangle with radius.



The example of making a C chamfering on a Triangle with radius.

Request for a quotation is [here](#).